

# KARYOTYPE

## Collection kit contains:

Collection test tubes with lithium heparin – 2 pcs. / Barcodes (study identification code) – 6 pcs.  
/ Cooling packs – 2 pcs. / Referral note for genetic testing – 1 pc.

The KARYOTYPE Collection kit is designed for safe transport of cytogenetic test material to the INVICTA Genetic Laboratory. Test material can be collected at a medical facility, and only by experienced medical staff. A karyotype assay determines the number and structure of chromosomes in the cells of the person examined. The assay analyses chromosomes derived from peripheral blood lymphocytes cultured in vitro.

### The main indications for the test are:

- Reproductive failure (miscarriage),
- Birth of a child with birth defects,
- Male/female infertility,
- Suspicion of a chromosomal aberration disease, on the basis of a set of clinical characteristics.

The test is also ordered before In Vitro Fertilization.

## Patient preparation

1. The Patient does not have to have an empty stomach, but an easily digested diet on the day preceding the test is indicated.
2. The Patient should refrain from alcohol consumption the day before, and cannot be under the influence of narcotics.

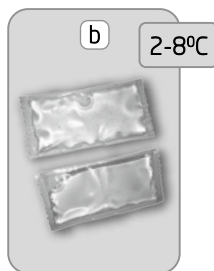
## Material collection

1. The test material is collected by qualified medical staff.
2. The material is collected at a medical facility.
3. Before the test, an authorised person files the 'Referral for a genetic test'
4. The referral must be filled in completely and legibly, and the Patient must sign a consent to the test.
5. Both test tubes must be labelled with the Patient's data (in the Patient's presence): First and Last name, and PESEL No.
6. The last 7 digits from the referral code must match the code on the transported test tubes.

**NOTE! All of the following test activities should be carried out wearing disposable medical gloves.**

Before the test, prepare the following items from the kit:

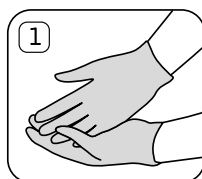
- a) Collection test tube with lithium heparin, labelled with a code (+ 1 spare test tube)
- b) Cooling packs (before transport, the cartridge should be stored at 2-8°C)



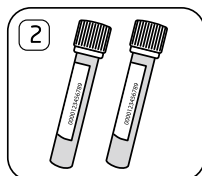
## Kit storage

Do not freeze or hold near a heat source.  
Kits should be stored refrigerated at 2-8°C.

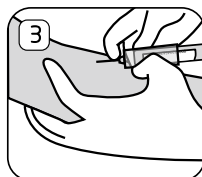
## Material collection



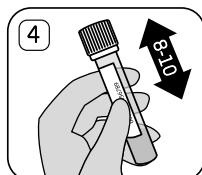
Wear disposable gloves.



Prepare the test tubes with the lithium heparin, previously labelled with the Patient's First and Last Name and PESEL No.



Blood must be drawn in a vacuum system, up to the mark on the test tube. The required blood volume is 4 ml. NOTE! Blood for laboratory testing must be drawn by qualified medical staff.



Once drawn, invert 8-10 times and store at 2-8°C until dispatch.



Before dispatching, check the tightness of the test tubes. Place the test tubes in the transport box with the referral. The material must be dispatched on the next day at the latest, so that the time of collection to its receipt at the INVICTA Medical Diagnostic Laboratory does not exceed 48 hours.

## Transport to the laboratory

Transport at 2-22°C. The material should be dispatched on the next day from collection at the latest, so that the storage and transport time of the specimen to the laboratory does not exceed 48 hours.

**Courier call at tel. +48 600 466 873**

Material dispatch by Courier:

**Mondays | Tuesdays | Wednesday**